

# GM Lighting

## XENON UNDERCABINET ACCENT LIGHTING - 12V XENON

Project: \_\_\_\_\_

Fixture Type: \_\_\_\_\_

Location: \_\_\_\_\_

Contact Phone: \_\_\_\_\_

### PRODUCT DESCRIPTION

GM Lighting's Xenon Undercabinet Accent Lighting puck is a 2-7/8" diameter surface or recessed mounted luminaire available in white, black, chrome, brushed nickel and bronze.

### PRODUCT SPECIFICATIONS

**Fixture Construction:** Two-piece, low profile (1" height) steel surface mount ring with matching lens holder that allows for either flush mount or surface mount recessed mounting. Frosted lens included.

**Electrical:** Puck comes complete with 48" leads and Molex® connector. Select transformer from remote transformer page of catalog. Catalog is available for download at [www.gmlighting.net](http://www.gmlighting.net)

**Lens:** Tempered frosted glass lens affixed permanently to lens holder.

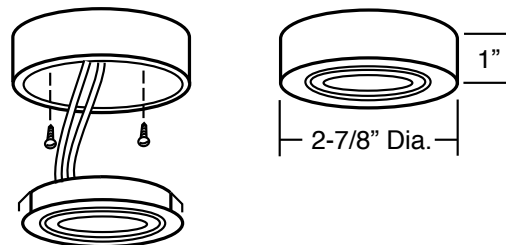
**Installation:** See installation diagram below.

**NOTE:** For recessed, cut 2-3/8" hole.

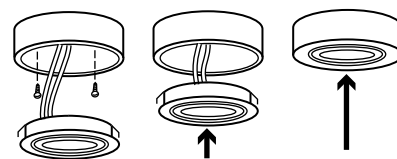
**Lamp:** 20W bi-pin Xenon.

**Label:** UL listed.

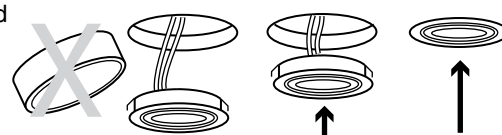
**3-light kit available**



Surface mount diagram



Recessed mount diagram



### ORDERING INFORMATION

Cat. No.	Watts	Color	Dimensions
XP20-W	20W	White	2-7/8" x 1"
XP20-B	20W	Black	2-7/8" x 1"
XP20-C	20W	Chrome	2-7/8" x 1"
XP20-BNK	20W	Brushed Nickel	2-7/8" x 1"
XP20-BZ	20W	Bronze	2-7/8" x 1"



**GM Lighting**

[www.gmlighting.net](http://www.gmlighting.net) • [www.lumentask.com](http://www.lumentask.com)

Telephone: (708) 671-0811 Toll-Free: (866) 671-0811 FAX: (708) 448-8545

e-mail: [gmlightingllc@sbcglobal.net](mailto:gmlightingllc@sbcglobal.net) • Specifications subject to change without notice. Patent pending